



**CROCODILE
CONTAINERS**

CONTAINER GRADING

“

At Crocodile Containers, we know that each shipping container has its own story, making grading a nuanced process. That's why we've developed a reliable framework to ensure consistency and fairness in our assessments.



LOT 307 ASHOVER RD, ARCHERFIELD, QLD 4108



WWW.CROCODILECONTAINERS.COM.AU



SALES@CROCODILECONTAINERS.COM.AU



1800 493 900

CONTAINER GRADING EXPLAINED

At Crocodile Containers, we know that each shipping container has its own story, making grading a nuanced process. That's why we've developed a reliable framework to ensure consistency and fairness in our assessments.

When a container arrives into our depot, we photograph it, giving you a clear view of its condition. These images are available for you to review upon request. We also encourage you to visit our depot to inspect containers in person, allowing you to make informed decisions and avoid potential pitfalls.

A world where scams are becoming more common, especially with unrealistically low prices online, we emphasise caution. Unlike many online operators, we prioritise transparency and professionalism. Our team is here to provide you with a safe and trustworthy experience when purchasing your shipping container.

INDUSTRY STANDARDS TERMS

Here are some standard terms you might encounter in the shipping container industry. At Crocodile Containers, we use these as a foundation before categorising containers into our own grading system. This helps simplify the process and ensures you know exactly what to expect:

As-Is

Containers sold in their current condition. They may have significant wear or damage, and buyers should carefully inspect them.

Cargo Worthy

Containers that are structurally sound and suitable for transporting cargo. They may have minor cosmetic damage but meet safety and compliance standards.

Wind & Water Tight (WWT)

Containers that are completely sealed and will protect contents from the elements. They may show signs of wear but are still functional.

IICL

(Institute of International Container Lessors)

Required for shipping. Repaired to the highest standard. Container meeting this grade can still have surface rust and minor dints.

CROCODILE CONTAINERS GRADING EXPLAINED BY GRADE

The main reason we implement our grading system is that a Cargo Worthy (CW) container may be suitable for shipping but could be rated as C grade cosmetically. Without the Crocodile grading system, you run the risk of purchasing a container that doesn't meet your expectations. Our system provides clarity and helps ensure you know exactly what you're getting, so you can make informed decisions with confidence.



CONTAINER GRADING



A-B-C-D Grading for Ex Shipping Line Containers – generally around 15+ years of age.

A GRADE

These containers are the best you can get of our ex-shipping line containers. They have some minor imperfections, but are still a great option, especially for the budget conscious shopper.



- ✓ Good straight roof
- ✓ Minor surface rust and dints
- ✓ Wind and watertight may have visible repairs
- ✓ Can have the CSC plate updated for sea and rail.

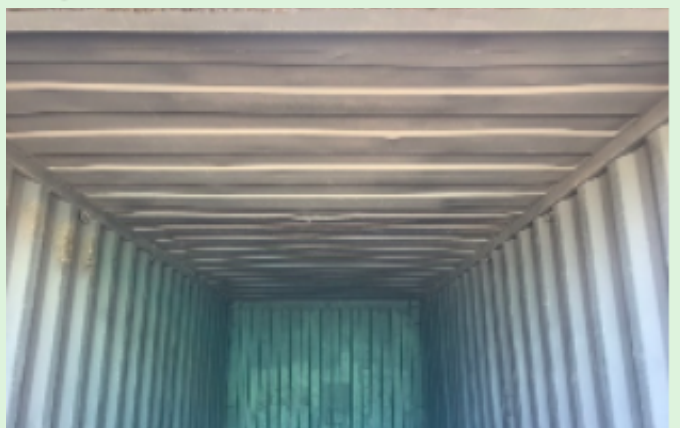


- ✓ Visible sign of repairs still WWT
- ✓ Showing surface rust and dent
- ✓ Dents in-side wall and roof
- ✓ Can have the CSC plate updated for sea and rail.



B GRADE

Still a good wind and watertight container to keep your gear out of the elements. B grades will show signs of repairs and ware but can still have the CSC plate update for sea and rail.



CONTAINER GRADING



A-B-C-D Grading for Ex Shipping Line Containers – generally around 15+ years of age.

C GRADE

These containers are in very bad condition but are still wind and watertight.



- ✓ Very dented but still wind and watertight
- ✓ Surface rust may be showing signs of the rust penetrating deeper
- ✓ Obvious repairs
- ✓ Not suitable for shipping or rail



- ✓ May have rust holes
- ✓ Damage could be structural
- ✓ Not suitable for shipping or rail



D GRADE

Damaged – Either not WWT or structurally damaged. We occasionally get these in stock and sell off cheap. These are great for someone looking for a bargain who can do the repairs themselves.



CONTAINER GRADING



REFURBISH

To any of the grade off container we can apply a new paint job. Before we paint, we buff back any surface rust first. We can paint in any colour of your choice.



NEW/ONE TRIP (1-3 Years old)

This is our newest grade. Since containers are built overseas, they need to travel to Australia before they're ready for sale. Sometimes, they sit in the factory for a period before arriving at our depot. As a result, while you're purchasing a new container, it may not always reflect the current year on the data plate. You might also notice minor scratches on the paint or very slight dints. Despite these small imperfections, these containers are still in excellent condition and ready for your needs.



NEAR NEW (3-8 Years old)

Similar condition to new containers, these typically come from our ex-hire fleet. Since they haven't been used for shipping, they remain in very good condition. While they will show signs of use and wear, you can expect only very minor surface rust, slight dints, and potentially some fading paint. Overall, these containers offer a great balance of quality and affordability, making them a solid choice for various needs.





**CROCODILE
CONTAINERS**

CONTAINER GRADING



LOT 307 ASHOVER RD, ARCHERFIELD, QLD 4108



WWW.CROCODILECONTAINERS.COM.AU



SALES@CROCODILECONTAINERS.COM.AU



1800 493 900